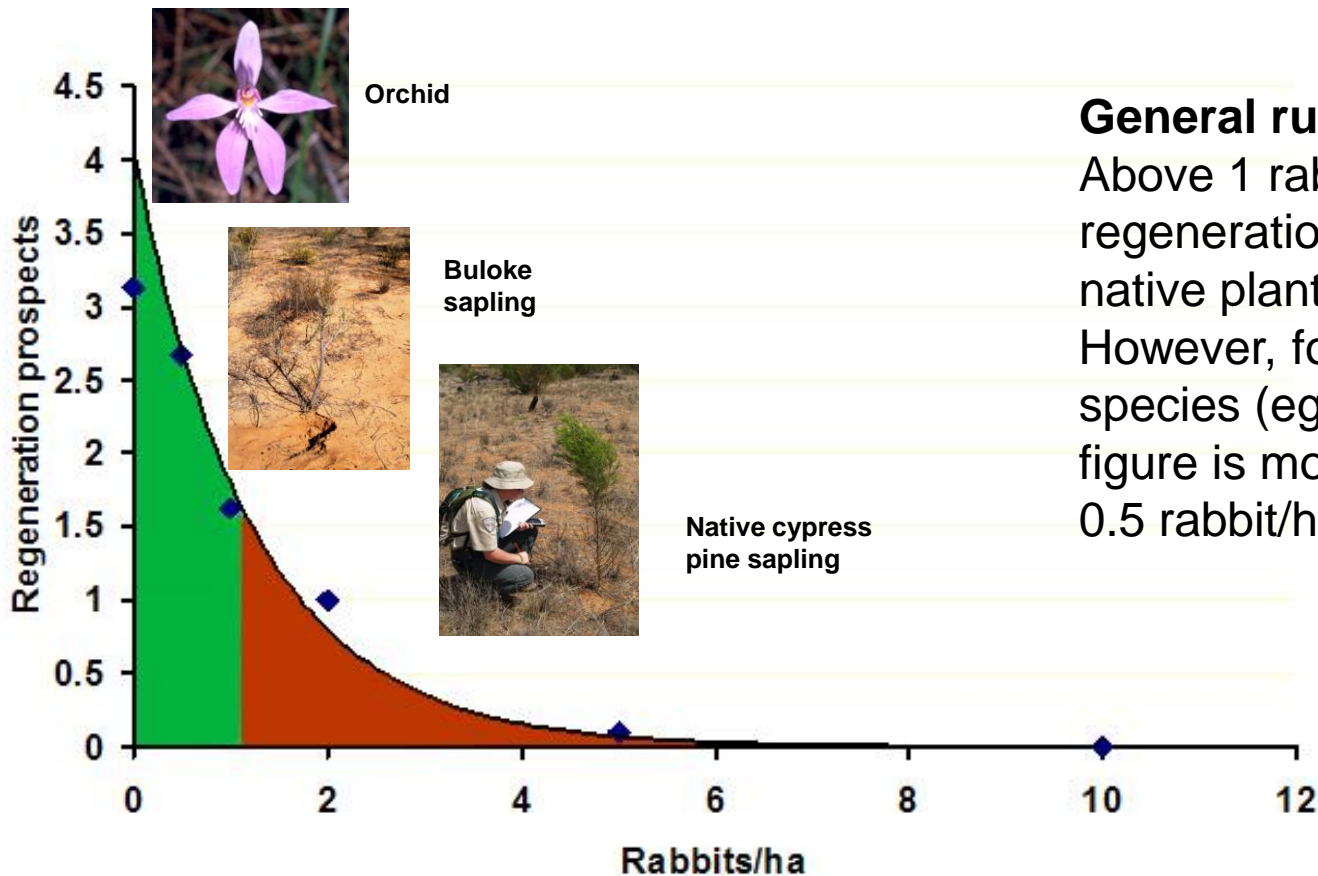


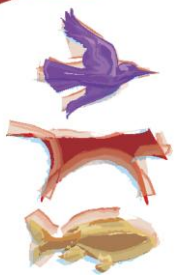
Invasive Animals Cooperative Research Centre

Nature's pain threshold is lower than grazier's



General rule of thumb:

Above 1 rabbit/ha general regeneration of palatable native plants is impeded. However, for some native species (eg. Bulokes) this figure is more likely to be 0.5 rabbit/ha.

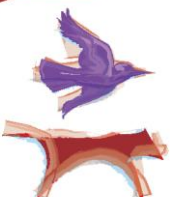


Together, create and apply solutions

Invasive Animals Cooperative Research Centre

RHD

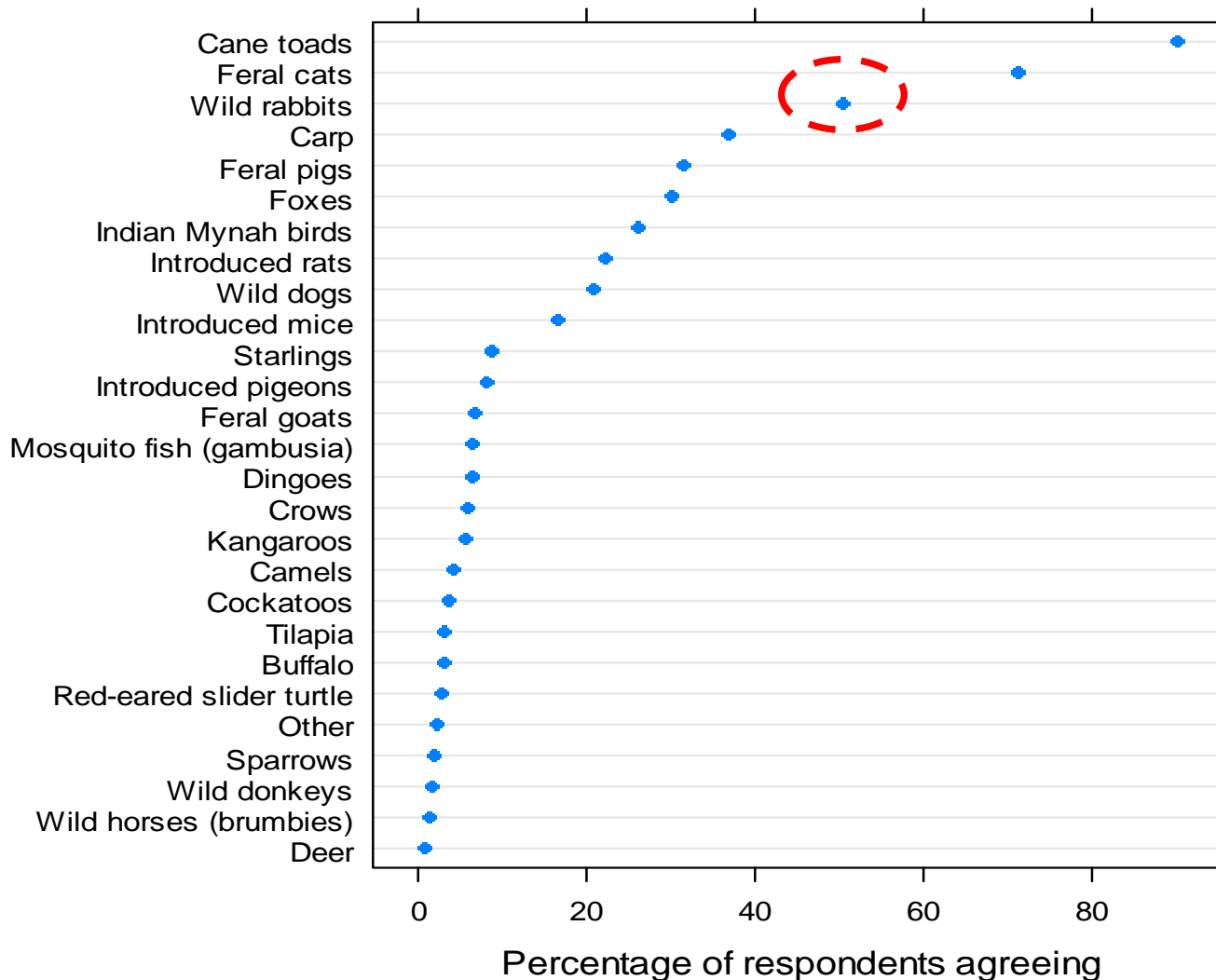


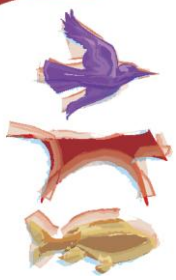


Together, create and apply solutions

Invasive Animals Cooperative Research Centre

Public perceptions of 'pests'





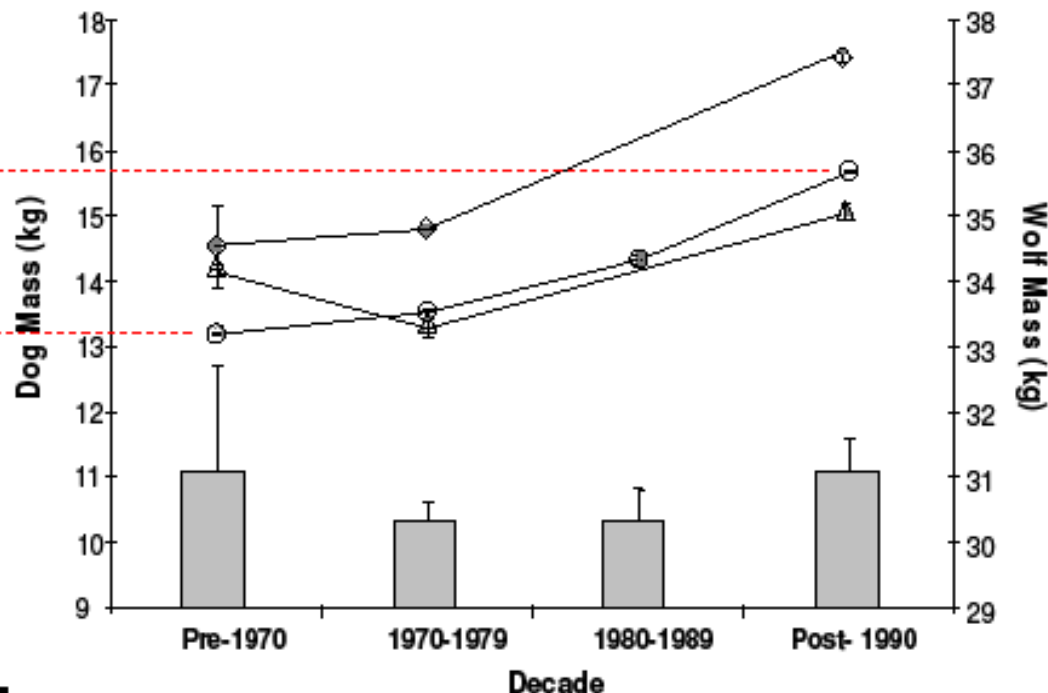
Wild dogs in Australia are getting bigger

- Dogs in Central Australia today are 21% bigger than before 1970;
- Dogs in Southern Australia today are 24% bigger than before 1970;
- “Super dingoes” are developing in areas of high hybridisation, especially the Great Dividing Range.

Spencer, Lapidge, Dall and Humphrys, unpublished

AVERAGE DOG WEIGHT- CENTRAL AUSTRALIA

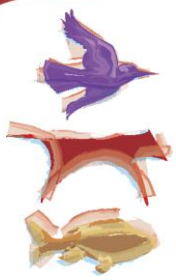
>2.5kg+ rise in the average weight of wild dogs captured in Central Australia



An
 Increase of
 21%

Bringing out the mongrel in the Australian Dingo-
 Spencer et al. *Wildl Res.* (submitted June 08)





Together, create and apply solutions

Invasive Animals Cooperative Research Centre

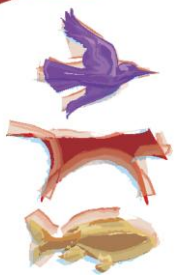
Giant snakehead

Channa asiatica (Cuvier, 1829)
Giant Snakehead



Buy one in NSW
for \$300-\$1000





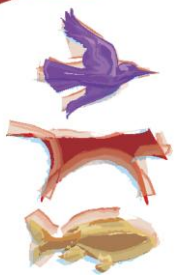
Together, create and apply solutions

Invasive Animals Cooperative Research Centre

The Serval



- About 20kg (4 x domestic)
- Most efficient hunting cat in Africa
- Natural reaction to domestic cat is to eat it, not mate it



Together, create and apply solutions

Invasive Animals Cooperative Research Centre

Cats Australia

(web page comment)

“cheetah”

F5 Savannahs due
Sept

2009 litter sold

2010 litter on sale

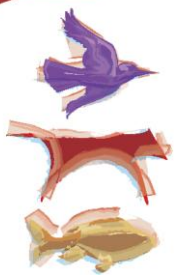
from \$5,000



One of the Savannahs

by P

IMAGINE having a cat that is purring on your lap. The size of a toddler, a Savannah cat will greet you at the door, fetch and jump in the pool. Described as ‘dogs in a cat’s clothing’, savannahs are bred from a serval – an African wildcat – crossed with a domestic cat breed. One of the largest domestic cats in the world



Together, create and apply solutions

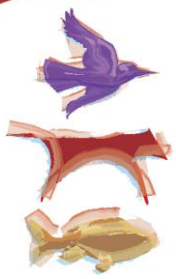
Invasive Animals Cooperative Research Centre

Why it is legal to import wolf-dog hybrids into Australia;

...domestic/non-domestic animals hybrids (eg bengal cats or wolf crosses) are not eligible for import unless they are proven to be 5 or more generations removed from their pure-bred non-domestic ancestors...

AQIS Requirements for the importation of cats and dogs...

Updated November 2007

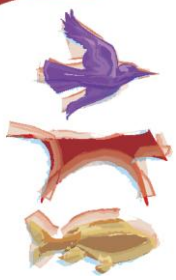


Only an idiot would own a wolf-dog!

- There are between 300,000 and 500,000 pet wolf-dogs in the United States;
- Heterosis (hybrid vigour) is common;
- Wolf hybrids may form larger packs than wolves;
- Wolfdogs ranks sixth in number of dog attack fatalities in the US (14 fatal attacks between 1979-1998).



Photos courtesy S. Lapidge, B. Morris, S. Sullivan, L. Allen



Invasive Animals Cooperative Research Centre

(some) Biotechnology approaches

- Not virally vectored immunocontraception.
- Gonacon: GnRH single shot vaccine;
- Running eggs out of ovaries (Michelson Grant shortlist). On trial in rats in Java.
\$9,000,000,000 annual rice impact of rats.
- “Daughterless” carp.
- Tilapia detection project with University of Notre Dame (have shown efficacy with Asian carp in Mississippi river).
- Need chip-type tools to check dogs and cats pre-border.